

Burns Treatment

Stretcher Trolley

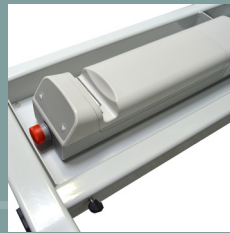
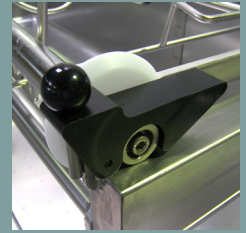
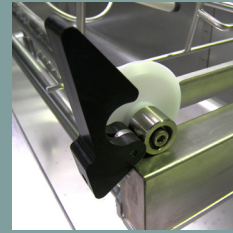
Variable height Stretcher trolley

REF. 5160.00

The 5160.00 Stretcher Trolley allows the transfer of patients with high dependency burns injuries from their bedrooms to the 4854.00 treatment bath. A guiding device ensures a flexible and secure transfer of the stretcher from the stretcher trolley to the bathtub. The electric variable height adjusts the desired height and a tilt adjuster provides support for the stretcher on the bathtub even when the floor is tilted.

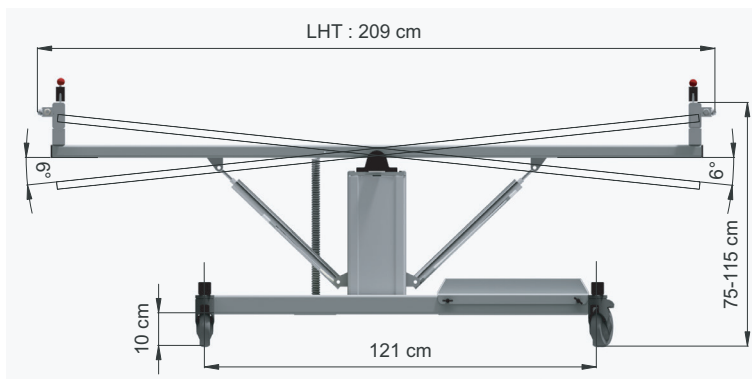


Stretcher Trolley



Variable height Stretcher trolley

REF. 5160.00



DESCRIPTION :

- Chassis & central bar in steel with paint coating, grey colour.
- Tubes supporting the stretcher in 316L stainless steel.
- 4 x Ø125mm braked wheels.
- Electric variable height by aluminium telescopic column.
- Position switch on each support.
- Tilt adjustment device until 6°.
- Electric feeding by removable battery 24V 2.9Ah
- Emergency stop.
- Electric emergency lowering and rising device.
- Removable cover for the battery pack.
- 2 functions hand control with battery status indicator.
- 24V external charger with battery status indicator.
- 2 stretcher blockers with safety pins.

PERFORMS :

- Safe Working Load : 160Kg
- Autonomy : 35 cycles at 140 kg

OPTION / ACCESSORY :

- 2.9Ah additional battery ref. 1442451

CONFORMITY :

- 93/42/CEE (Medical Equipment Directive)
- NF EN 12182 (Tech. support systems for less abled persons)
- NF EN 1441 (Risk analysis for medical equipment)