

Shower Chair

# Soflex

Shower chair

Versatile and easy to use



## Multifunctional comfort from one chair

REF. 5601.00

MADE IN  
FRANCE

SINCE 1976

The "Soflex" is a height adjustable tilt-in-space shower and toileting commode designed to provide, added comfort and posture management during bathing and toileting procedures.



Picture shows:  
Hydraulic Soflex **5601.00**  
with leg-support Option  
**5600.50**

**REVAL**  
LE BIEN-ÊTRE DURABLE

## Shower Chair

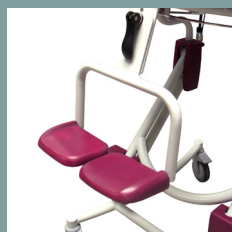
### Soflex



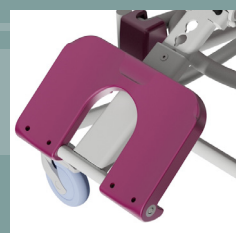
Moulded aperture seat



Commode pan option



Adjustable footrest



Leg-support option



Adjustable headrest



Hi/lo hydraulic pedal

- Head and footrest that can be adjusted to match all heights and body types.
- The specially shaped and comfortable base facilitates washing, easily fits a wc pan or provides direct access to toilet seat.
- Takes up little floor space and features four swivel wheels with brakes.
- A powerful actuator that effortlessly lifts patients weighing up to 125 Kg.

## Multifunctional comfort from one chair

REF. 5601.00

### Specifications

- Tubular steel structure, grey Rilsan coating.
- Ø125mm swivel castors with brakes.
- Pushing handle.
- Folding armrests with safety locks.
- Folding footrests adjustable in height.
- 3 part detachable headrest adjustable in height.

### Performance features

- Suitable for persons weighing up to 125 Kg.
- Total weight of the chair : hydraulic 35 Kg
- Minimum height of seat : 50 cm
- Lifting range : 55 cm
- Tilt range of the seat : 1 - 10° then 10 - 30°
- Height adjustment for headrest : 13 cm
- Height adjustment for footrests : 10 cm

### Models

- Soflex (hydraulic model) ref. **5601.00**
- Adjustable height with tilt function.

### Conformity

CE marking - 93/42/EEC directive (medical devices)



## Shower Chair

### Soflex

## ADDITIONAL OPTIONS AND EQUIPMENT

5600.10



Commode pan option with guide rail.

5600.20



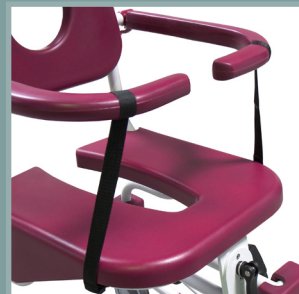
Abdominal sling.

5600.21



Set of 2 waterproof protections for abdominal sling.

5600.30



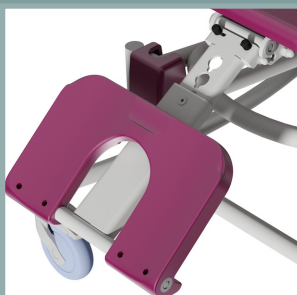
Adducting sling.

5600.40



Foot sling.

5600.50



Footrest/Leg support.

5600.60



Hair wash basin.

5600.70



Adaptive seat plug.

5600.80



Seat and back cushion.